



SRI SIVANI COLLEGE OF PHARMACY

(Under the Management of Sri Sivani Educational Society, Srikakulam)
(Estd.2007, Approved by PCI-New Delhi and Affiliated to JNTU, Gurajada-Vizianagaram)
N.H-16, Chilakapalem Jn., Etcherla Mandal, Srikakulam Dist - 532402.

BAMBOO

BOTINICAL NAME: *BAMBUSA VULGARIS*

FAMILY: Poaceae

SYNONYMS:

ENGLISH: Rattan, cane, sisal

HINDI: Baans

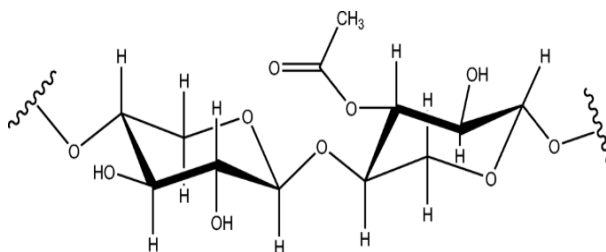
TAMIL: Mūñkil

TELUGU: Veduru



CHEMICAL CONSTITUENTS:

- ❖ The lignin content ranges between 20.90 and 30.13 per cent, whilst holocelluloses range between 69.01 and 72.34 per cent. Alpha cellulose ranges from 58.97 to 61.54 per cent. The cold water solubility of bamboo samples from the sites ranges from 7.89 to as high as 16.70 per cent.



USES:

- 1) Houses, schools and other buildings. Today, over one billion people in the world live in bamboo houses
- 2) Roads and bridges
- 3) Medicines
- 4) Bamboo Clothes
- 5) Accessories
- 6) Food
- 7) Fuel
- 8) Scaffolding
- 9) Construction materials to food, medicine
- 10) Musical instruments