



SRI SIVANI COLLEGE OF PHARMACY

(Under the Management of Sri Sivani Educational Society, Srikakulam)
(Estd.2007, Approved by PCI-New Delhi and Affiliated to JNTU, Gurajada-Vizianagaram)
N.H-16, Chilakapalem Jn., Etcherla Mandal, Srikakulam Dist - 532402.

BRYOPHYLLUM

BOTINICAL NAME: *KALANCHOE SECT. BRYOPHYLLUM*

FAMILY:Crassulaceae

SYNONYMS:

ENGLISH:Life Plant, Mother of Thousands

HINDI: Kalanchoe pinnata

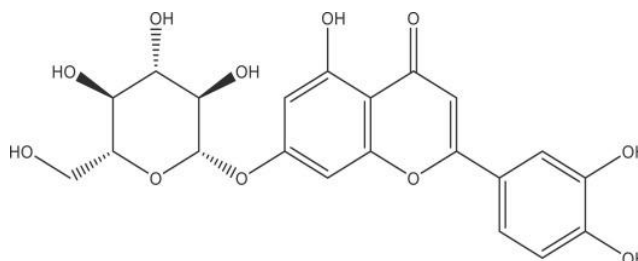
TAMIL: Kuttipodum

TELUGU: Ranapalaaku



CHEMICAL CONSTITUENTS:

- ❖ Alkaloids, Flavonoids, Saponin, tannin, phytate, phenol, calcium, magnesium, phosphorous, sodium, and potassium.



USES:

- ❖ Eaten for diabetes
- ❖ Diuresis
- ❖ Dissolving kidney stones
- ❖ Respiratory tract infection
- ❖ As well as applied to wound
- ❖ Boils, and insect bites
- ❖ It is useful for preventing alcoholic
- ❖ Viral and toxic liver damages
- ❖ Regular intake can often help with the implantation of a fertilised egg in the uterus, as the effect of Bryophyllum is similar to that of the hormone progesterone.
- ❖ Bryophyllum leaves can also help to relieve inflammation, for example in the uterus, and support healing