



SRI SIVANI COLLEGE OF PHARMACY

(Under the Management of Sri Sivani Educational Society, Srikakulam)
(Estd.2007, Approved by PCI-New Delhi and Affiliated to JNTU, Gurajada-Vizianagaram)
N.H-16, Chilakapalem Jn., Etcherla Mandal, Srikakulam Dist - 532402.

GUAVA

BOTINICAL NAME: *PSIDIUM GUAJAVA*

FAMILY: Myrtaceae

SYNONYMS:

ENGLISH: strawberry guava, true guava

HINDI : amarood

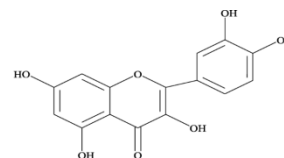
TAMIL: Koyyā

TELUGU: Jāmapaṇḍu

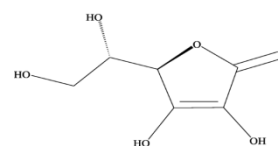


CHEMICAL CONSTITUENTS:

- ❖ The guava fruit contains vitamin A, C, iron, phosphorus and calcium. It has more vitamin C than the orange. The fruit contains saponin, oleanolic acid, lyxopyranoside, arabopyranoside, guaijavarin, quercetin and flavonoids.



(a)



(b)

USES:

- ❖ Diabetes
- ❖ Boosting immunity
- ❖ Cancer
- ❖ Heart Disease
- ❖ Weight loss
- ❖ Menstrual cramps
- ❖ Cough
- ❖ Diarrhea
- ❖ Digestive Health
- ❖ Antioxidant activity